



READY TO BUILD PLANS

AN ENTERTAINER'S DREAM

277.9M<sup>2</sup>

# Kano

4 2.5 2 2

This contemporary and striking design features a spectacular kitchen and well-appointed scullery, which will thrill even the most discerning entertainer. Spacious open plan living opens to alfresco entertaining on two sides, and a separate media room and generous master bedroom suite completes the picture downstairs.

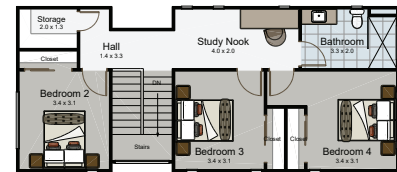
The master suite enjoys a luxurious ensuite and dressing room, to rival an elite hotel. Family accommodation occupies the upper level, with a further three double bedrooms, study nook, and family bathroom.

## SPECIAL FEATURES

- Multiple alfresco entertaining options
- Luxurious ensuite and walk-in wardrobe off a spacious master suite
- An entertainers' dream kitchen

## DIMENSIONS

Lower Floor Area	161.4m <sup>2</sup>
Upper Floor Area	67.7m <sup>2</sup>
Garage Area	42.1m <sup>2</sup>
Open Below	6.7m <sup>2</sup>
Total Floor Area	277.9m <sup>2</sup>
Porches	13.6m <sup>2</sup>
Total Area	291.5m <sup>2</sup>
Overall Dimensions	23.0m x 18.5m



UPPER LEVEL

