

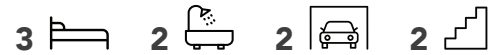


READY TO BUILD PLANS

**ENTERTAINER'S FAMILY HOME**

**219.2M<sup>2</sup>**

# Atlanta



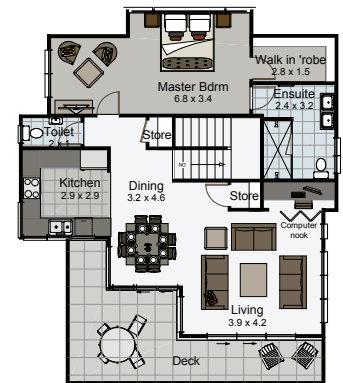
This interesting home offers plenty of living space with the perfect balance between family living and entertaining guests. The family room and two bedrooms are on the ground floor, providing a natural division from the upstairs living and entertaining areas. With so much living space in this home there will always be somewhere quiet to relax.

**SPECIAL FEATURES**

- Upstairs living
- Compact design for smaller sites
- Master suite on main living level
- Extensive deck area upstairs
- Covered outdoor area opening from downstairs family living
- Double shower and vanity in ensuite

**DIMENSIONS**

Lower Floor Area	89.1m <sup>2</sup>
Upper Floor Area	96.0m <sup>2</sup>
Garage Area	34.1m <sup>2</sup>
Total Floor Area	219.2m <sup>2</sup>
Porches	20.5m <sup>2</sup>
Total Area	239.7m <sup>2</sup>
Overall Dimensions	14.2m x 12.3m



UPPER LEVEL

