



READY TO BUILD PLANS

**THE ENTERTAINERS HOUSE**

**234.3M<sup>2</sup>**

# Aotea



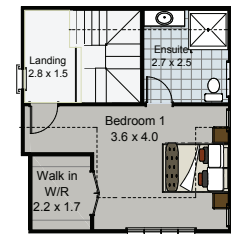
The Aotea design makes you feel at home and is superbly functional and inviting. From the spacious entry, a gracious stairway leads to the upstairs master suite and living area. Double doors open to a separate lounge that enjoys morning or afternoon sun, providing scope for year-round outdoor enjoyment. A large window-seat in the kitchen provides a gathering place for a coffee and a chat.

**SPECIAL FEATURES**

- Classic weatherboard exterior
- Asphalt shingle roof
- Four bedrooms and two bathrooms
- 2.7m ceiling height with coved ceiling in master suite upstairs
- Designer kitchen and abundant storage

**DIMENSIONS**

Lower Floor Area	156.3m <sup>2</sup>
Upper Floor Area	42.4m <sup>2</sup>
Garage Area	35.6m <sup>2</sup>
Total Floor Area	234.3m <sup>2</sup>
Porches	6.0m <sup>2</sup>
Total Area	240.3m <sup>2</sup>
Overall Dimensions	21.5m x 13.6m



UPPER LEVEL

