



READY TO BUILD PLANS

SPACIOUS FAMILY HOME

187.5M²

Ararimu

3 2.5 2 2

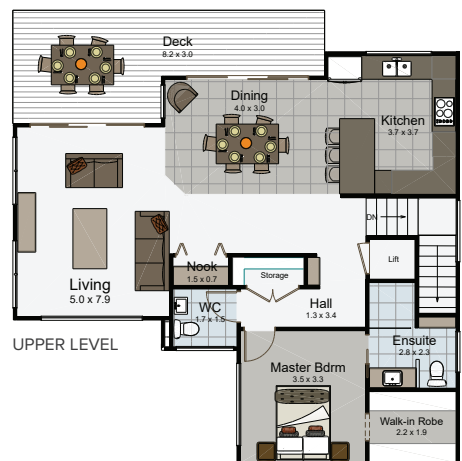
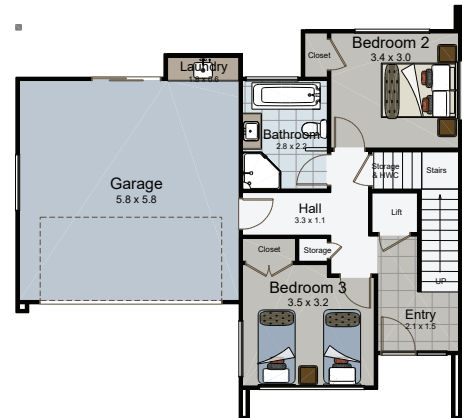
This two level modern home, features an open plan living, dining and kitchen upstairs, along with a guest powder room, and the master suite – making life easy in this spacious family home. Downstairs extra bedrooms, bathroom, internal access to the garage & laundry, and plenty of storage under the stairs. A lift-well future proofs this home.

SPECIAL FEATURES

- Upstairs master suite creating privacy from other bedrooms
- Two bedrooms with bathroom downstairs
- Open plan kitchen, dining and living rooms offers sense of space
- Compact footprint to suit smaller sites

DIMENSIONS

Lower Floor Area	54.3m ²
Upper Floor Area	93.2m ²
Void Area	4.7m ²
Garage Area	35.3m ²
Total Floor Area	187.5m ²
Porches/Decks	19.4m ²
Total Area	206.9m ²
Overall Dimensions	11.8m x 10.9m



UPPER LEVEL